

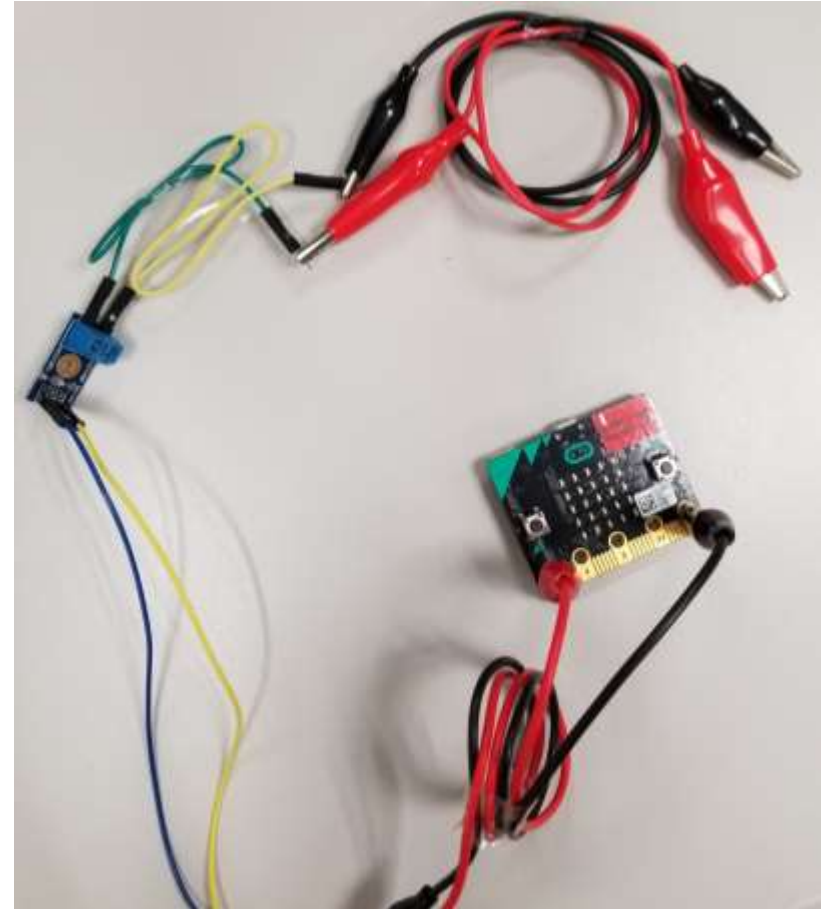
瑪利諾神父教會學校 (小學部)

PART 1: Voltmeter

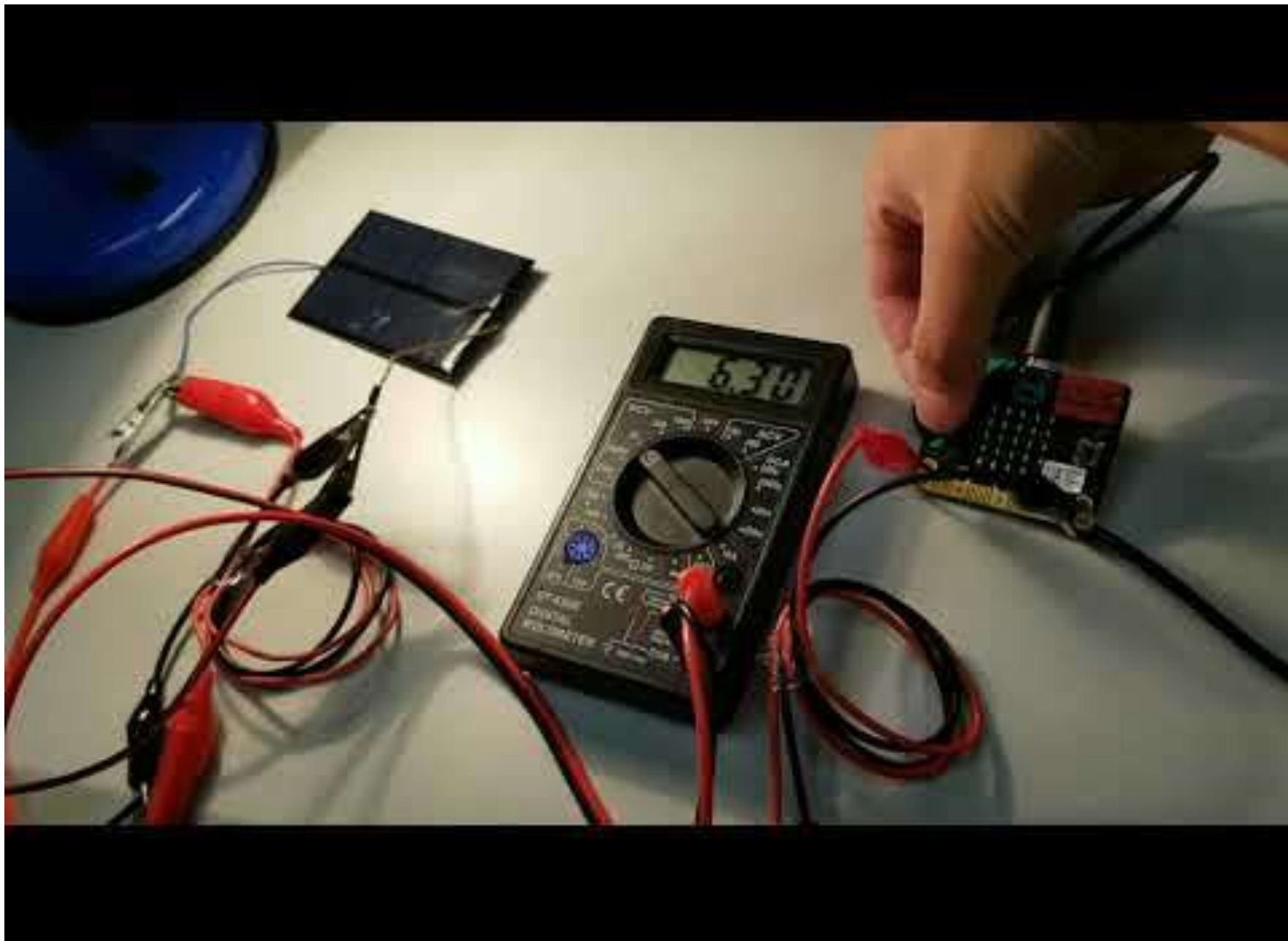
Image of the micro:bit voltmeter

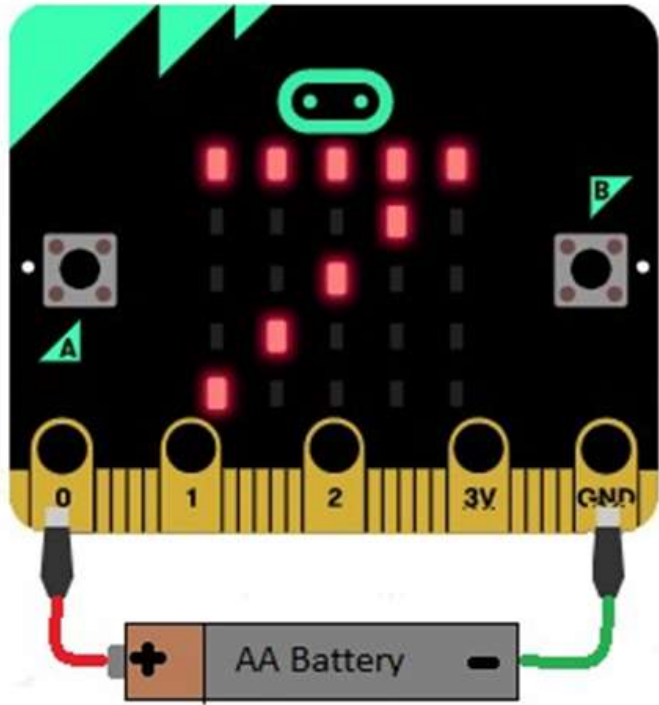


=

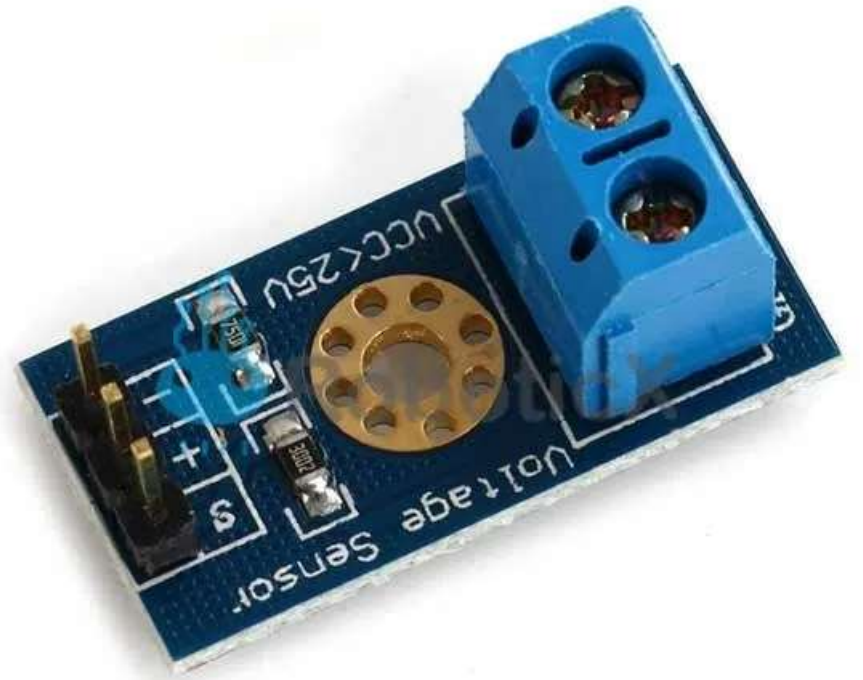


?

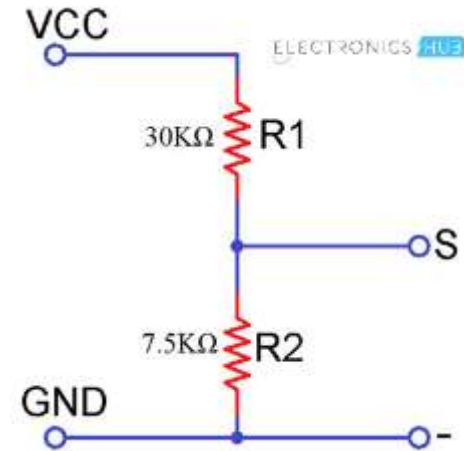
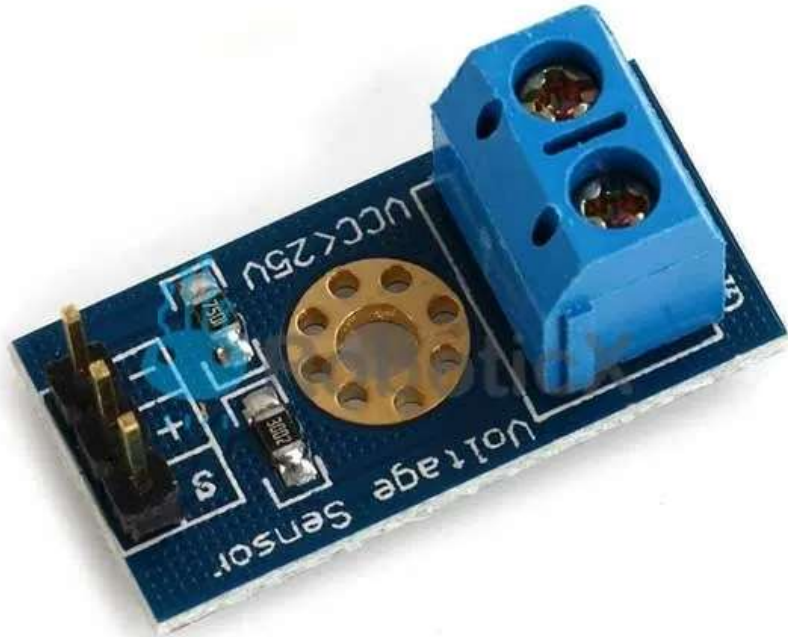




+



B25 VOLTAGE SENSOR MODULE



External Input voltage limit:

5V (Arduino) → DC 25V

3.3V (Micro:bit) → DC 16.5V

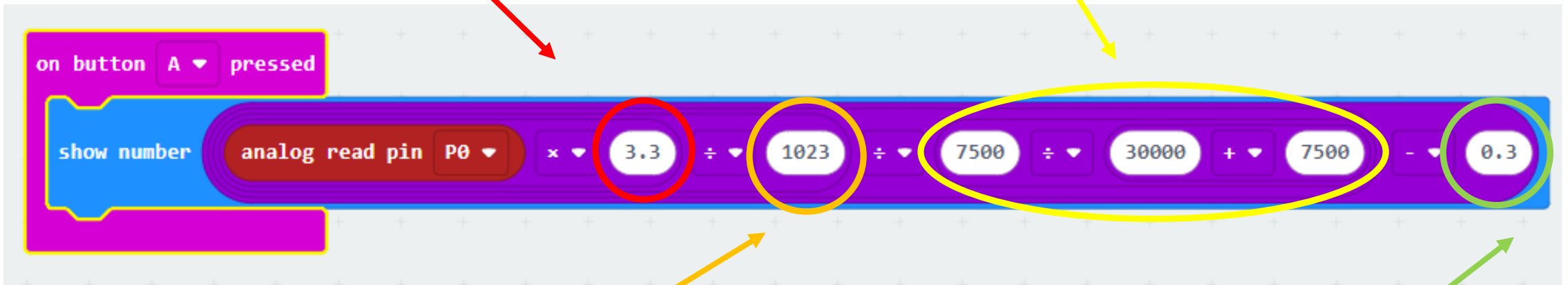
Price:

TaoBao → ¥2.5

HKSTEM Club → \$12

Input voltage of micro:bit

Other part of the formula (Can be ignored)



Analog reading (0 - 1023)

Calibration (Important)

on button A pressed

show number

analog read pin P0 \times 3.3 \div 1023 \div 7500 \div 30000 $+$ 7500 $-$ 0.3

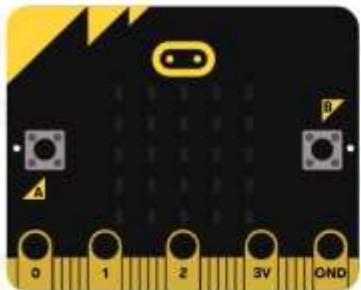
serial write number

analog read pin P0 \times 3.3 \div 1023 \div 7500 \div 30000 $+$ 7500 $-$ 0.3

micro:bit Home Share

Blocks JavaScript

Microsoft



Go back

Device



A	B	C
	time (source1)	
	0	3.070996094
	7.198	2.990429688
	15.397	6.261425781
	26.2	6.406445313
	32.359	7.01875

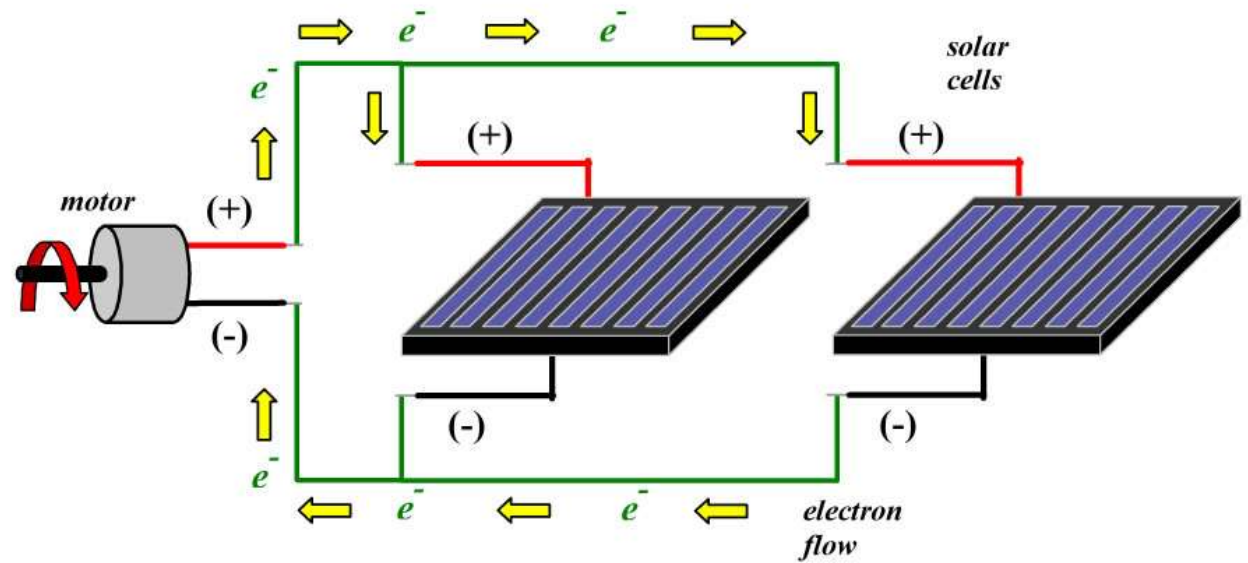
```
3.07099609375
2.9904296875
6.26142578125
6.4064453125
7.01875
```

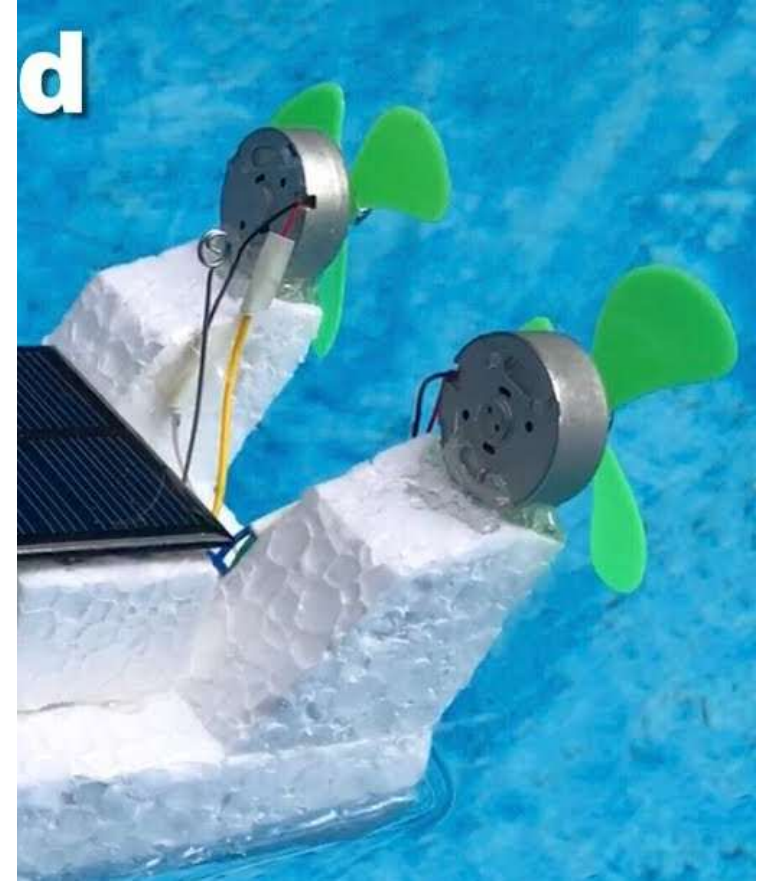
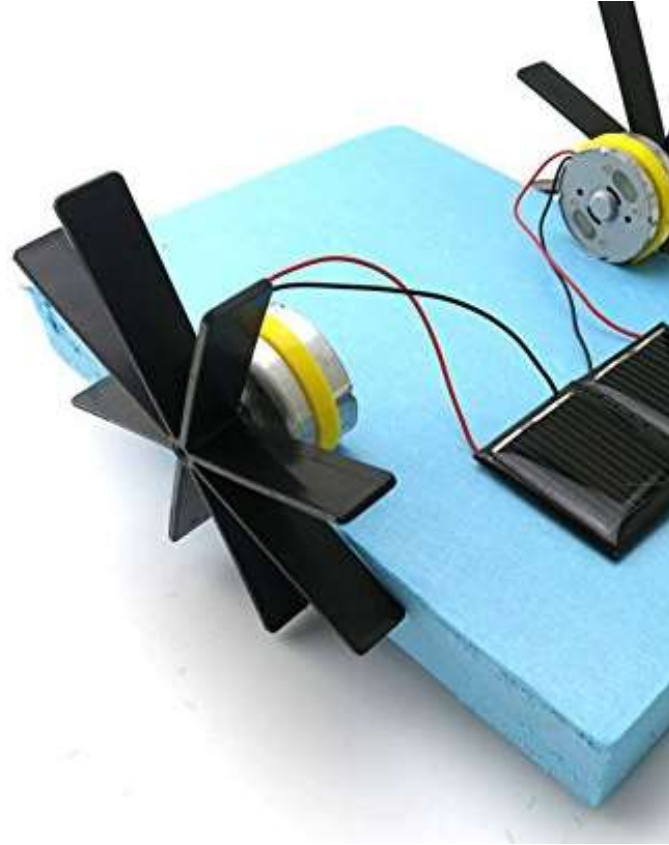
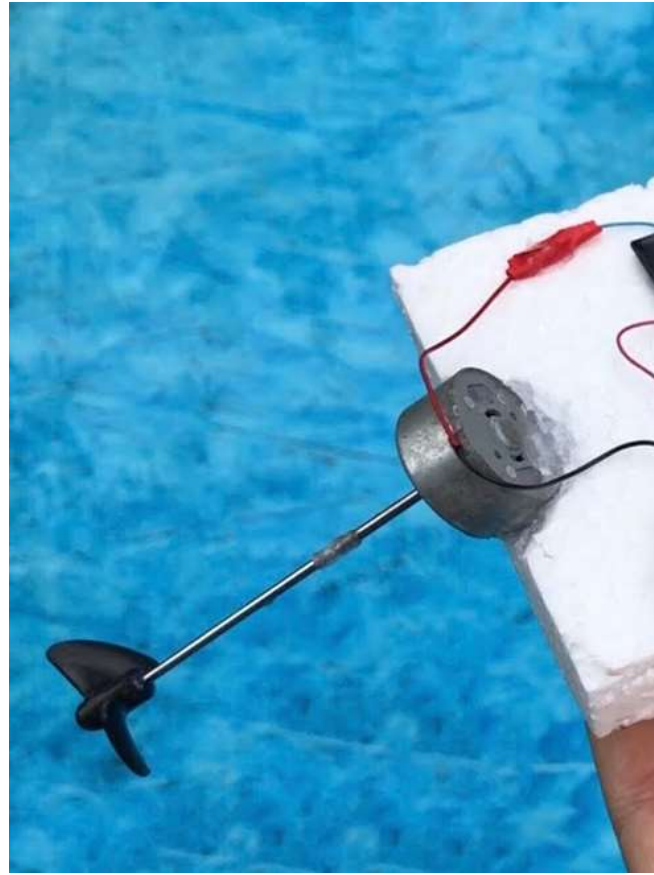
PART 2: Prototype Design

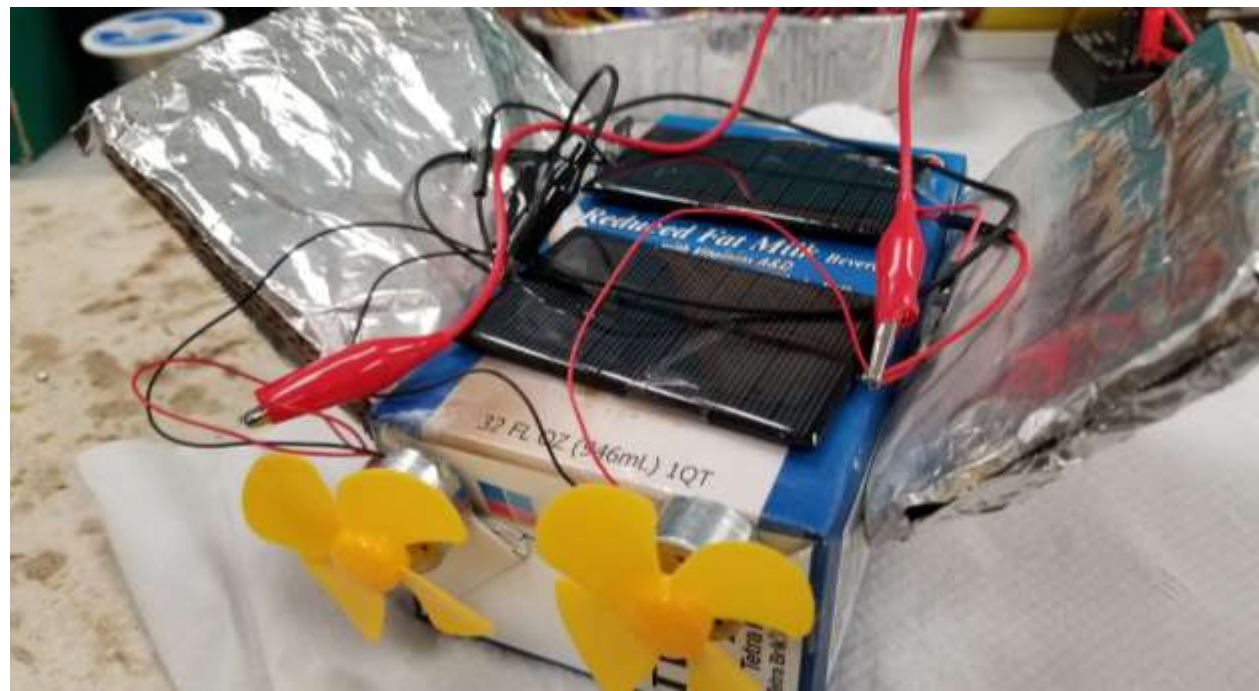


5.5V Solar Panels

Solar Cells in Parallel



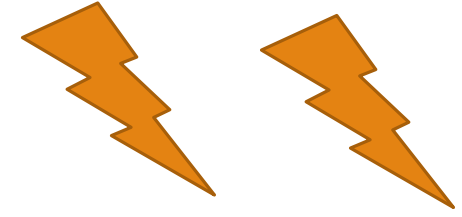
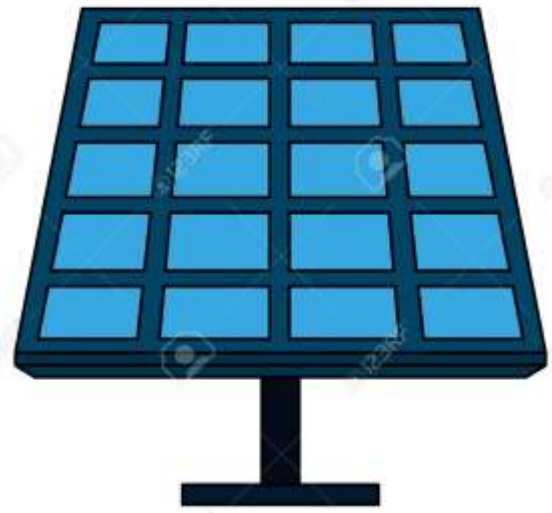




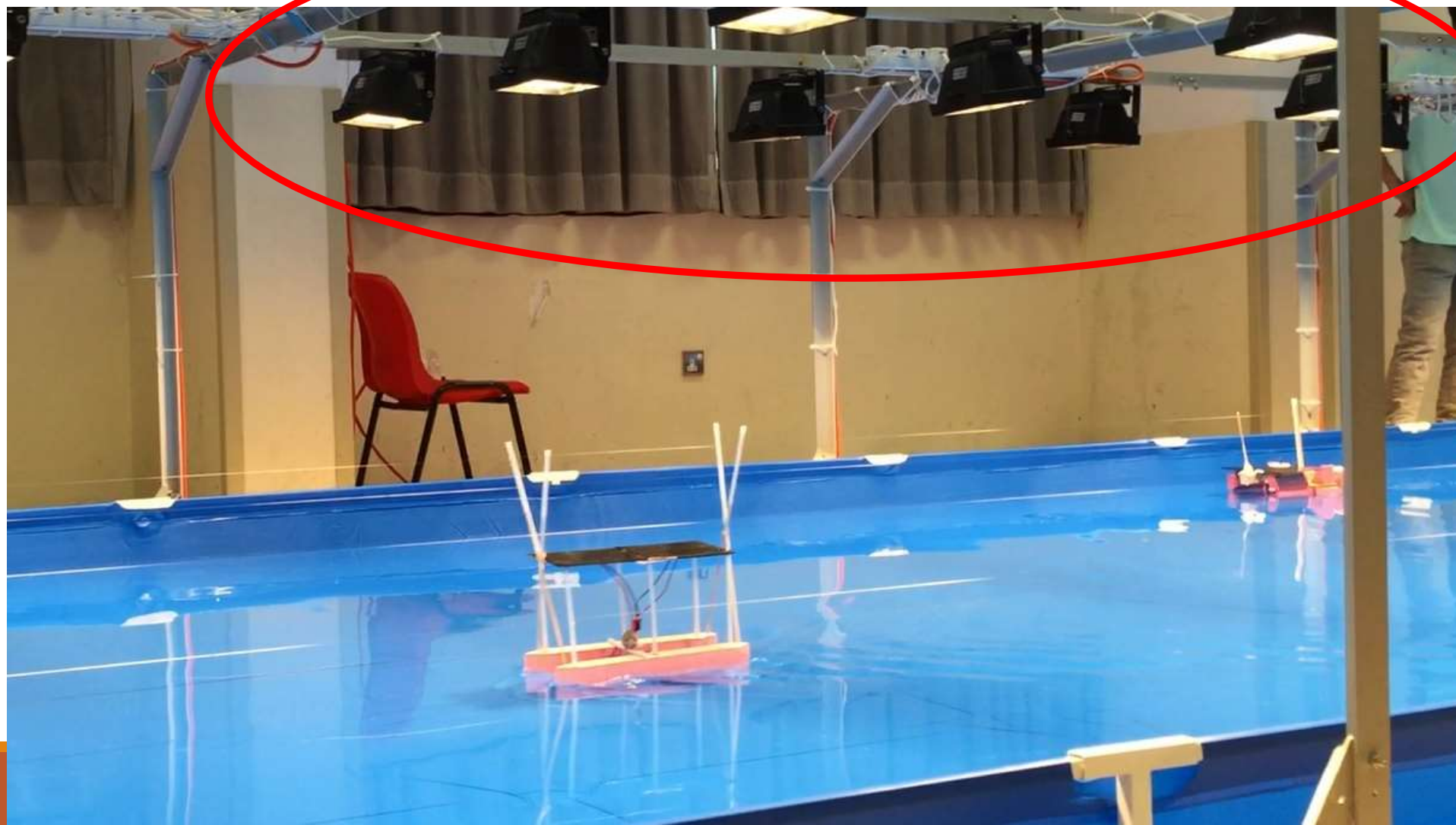
PART 3: LED Light Tunnel



Distance \leq 28cm



500W 太陽燈





DS4-L200 300W



DS4-L300 300W

LED Powered by:



Standards

- EN55015:2006+A1:2007+A2:2009
- EN50529:1991+A1:2000
- EN60598-1
- EN60598-2-5
- EN61547:2009
- EN61000-3-2:2006+A1:2009+A2:2009
- EN61000-3-3:2008

RoHS Standards

- EPA3050B:1996
- EPA3052:1996
- EPA3060A:1996
- EPA7196A:1992
- EPA3540C:1996
- EPA8270D:2007
- EOC62221:2008
- EN1122B:2001

LED Flood Light

High quality **Bridgelux LED chips** flood light, Die-cast aluminium body with tempered glass and Aluminium reflector, Integral **Mean Well LED driver**.

Applications

It is widely used in parks, hotels, bars, gardens, buildings, lamp posts, playing grounds, stadiums.

Product Specification

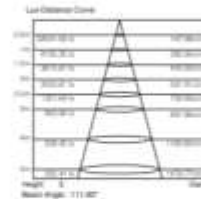
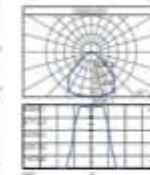
Model :	DS4-L200	DS4-L300
Light source :	Bridgelux LED	Bridgelux LED
Power :	300W	300W
Lumen output :	130 lm / W	130 lm / W
Lamp efficiency :	85%	85%
LED Life time :	50,000 hrs	50,000 hrs
Input voltage :	220-240Vac 50/60Hz	220-240Vac 50/60Hz
Working Temp. :	-40°C ~ +50°C	-40°C ~ +50°C
Working Humidity :	0% - 50%	0% - 50%
Color temp. :	Warm white, Natural White and Cool white	Warm white, Natural White and Cool white
Light Angle :	120°	120°
Body color :	Black	Black
Product size :	L400 x W340 x D150mm	L700 x W290 x D110mm
Protection :	IP65	IP65

Photometric Data

DS4-L300 300W

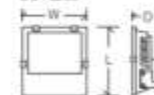
Light source: BRIDGELUX
 Efficiency: 85%
 Lifetime: 50,000 hrs
 Beam angle: 120°
 Mean beam candle: 130 lm/W

Light source: BRIDGELUX
 Efficiency: 85%
 Lifetime: 50,000 hrs
 Beam angle: 120°
 Mean beam candle: 130 lm/W



Product dimension

DS4-L200



DS4-L300



LED Flood Light

三维直角连接件

各类框架

组装简单
绿色环保
承重能力强
外形美观大方



三通

金属合页

平机螺栓

尼龙把手

内置角槽

